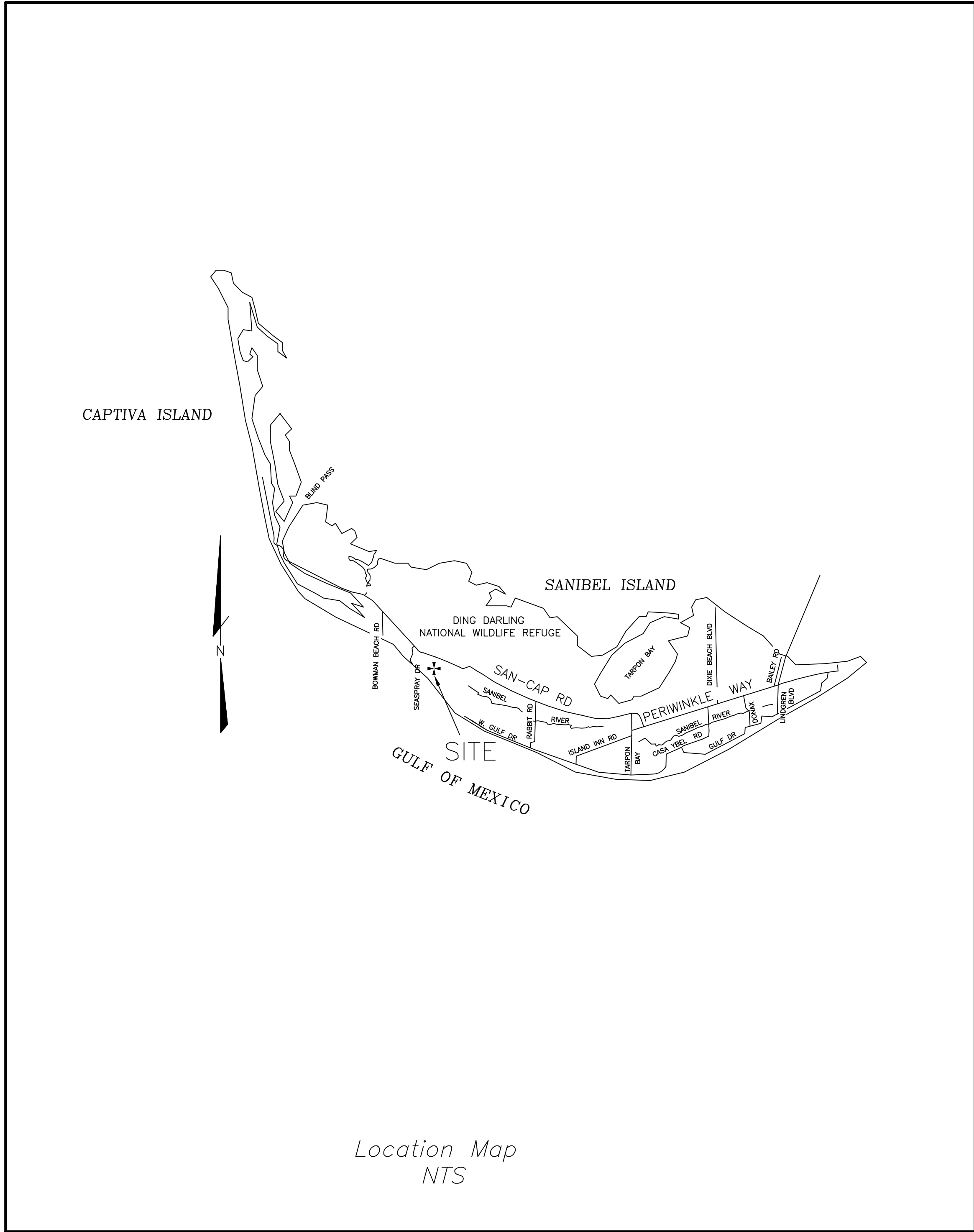


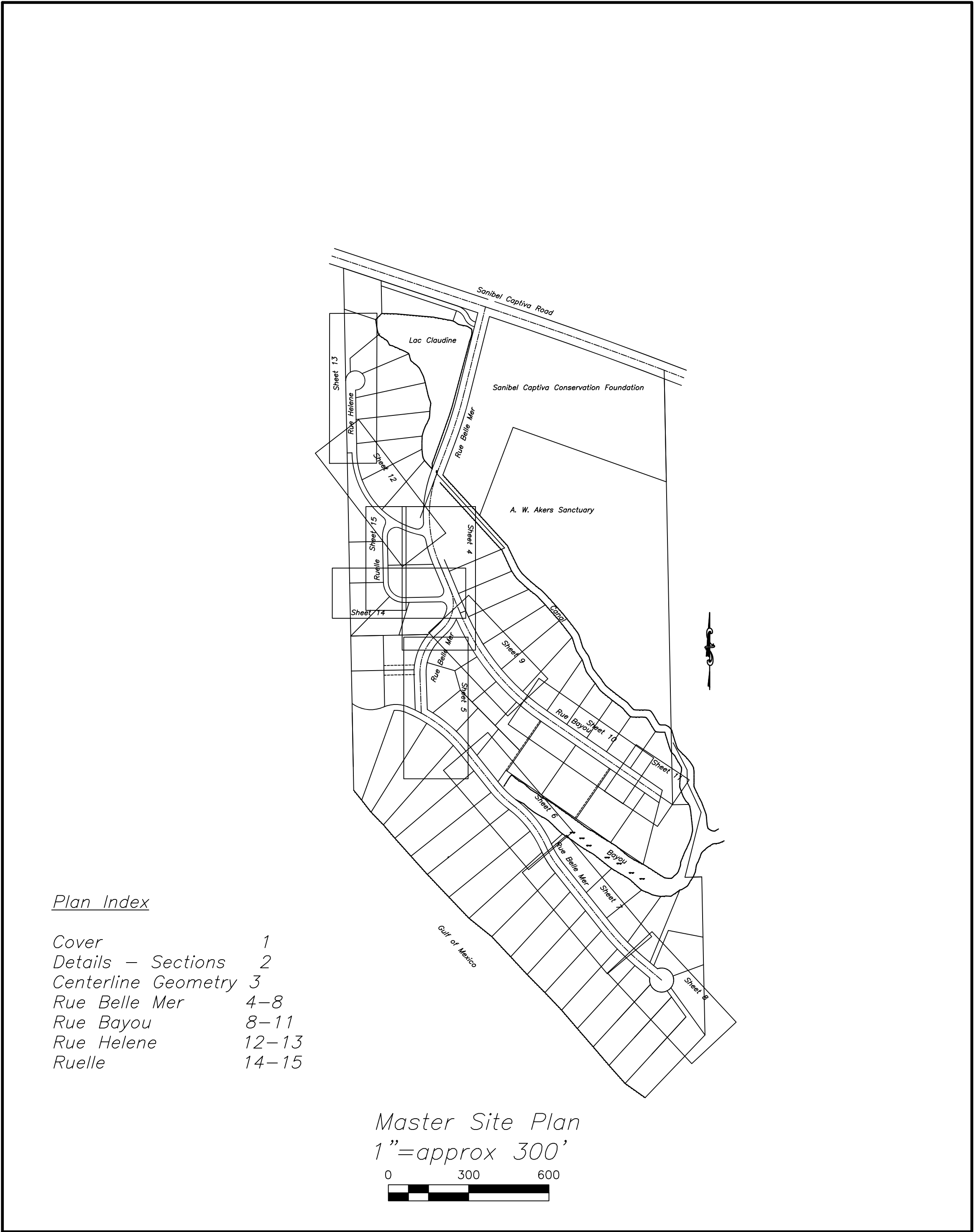
# Roadway Improvements

Chateaux Sur Mer

Section 19, Township 46 South, Range 22 East  
City of Sanibel, Lee County, Florida



Location Map  
NTS



Master Site Plan  
1"=approx 300'  
0 300 600

Prepared for  
Chateaux Sur Mer Improvement Association  
P.O. Box 1292  
Sanibel, FL 33957

Prepared by  
JAMES H. STROTHERS, PE  
Professional Engineer  
2459 Harbour Lane Sanibel, FL 33957  
239-851-1112